

# HPVB-E SERIES

HYDRAULIC PILOT  
CONTROL



TECHNICAL CATALOGUE

**HYDRAULIC PILOT CONTROL**

HPVB/E Pilot Control Valves are well established products within the Hydreco Hydraulics range.

This product, with its individual lever control, supported by an extensive range of characteristics, is suitable for a huge variety of applications.

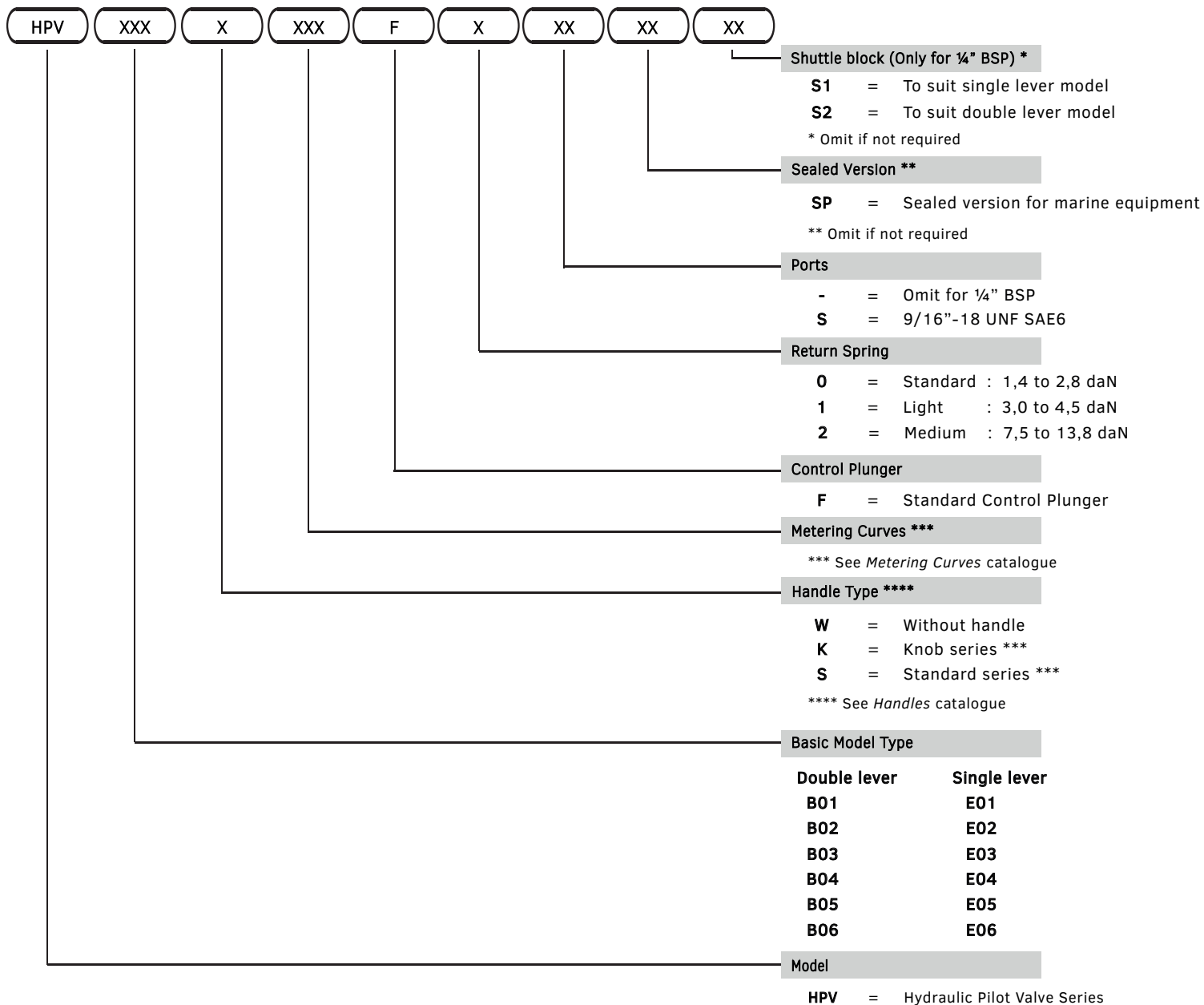
Our engineers can offer specialistic support to optimise this product to suit your application.

**BENEFITS**

- Compact and lightweight
- All ports on bottom face for easy installation
- Simple to mount
- Compatible with a wide range of product
- Operator is protected from high temperatures components
- Low hysteresis, high accuracy pressure control curves
- Low effort control with spring centered and detented versions available

**HPVB/E SERIES - MODEL CODING**

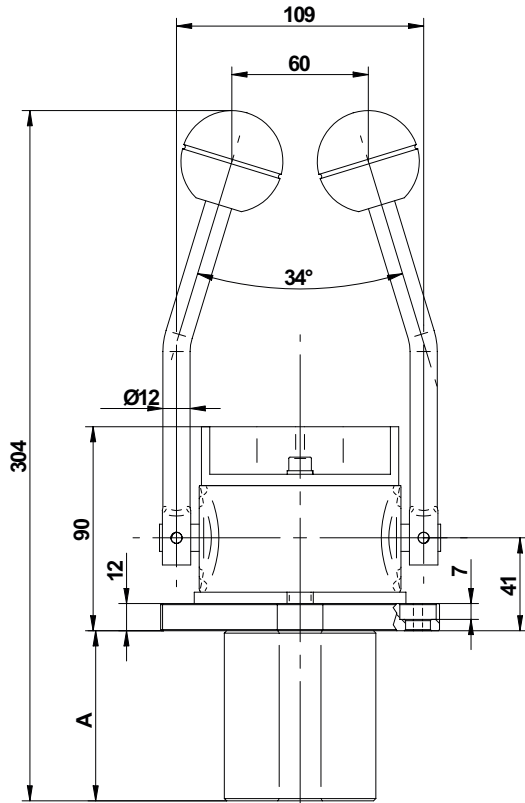
Hydreco Hydraulics reserves the right to update the information and data contained in this catalogue at any time without notice



Example: HYDRAULIC PILOT VALVE, TYPE DOUBLE LEVER 01, HANDLE SPHERICAL KNOB, METERING CURVE n. 049, STANDARD PLUNGER, RETURN SPRING TYPE 0: **HPV-B01-KP-049-F-0**

**B1 - PILOT OPERATED CONTROL**

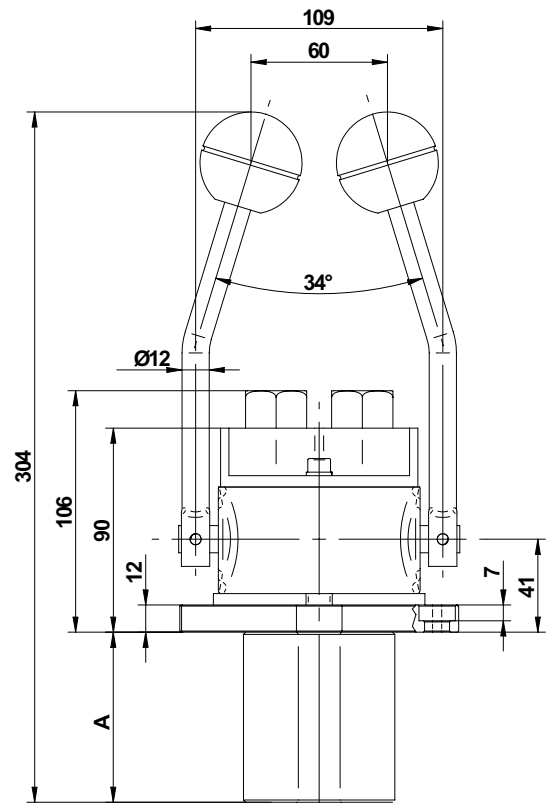
2 side levers with return spring



A=75mm FOR 1/4" BSP PORTS  
 A=82 mm FOR 9/16"-18 UNF SAE6 PORTS

**B2 - PILOT OPERATED CONTROL**

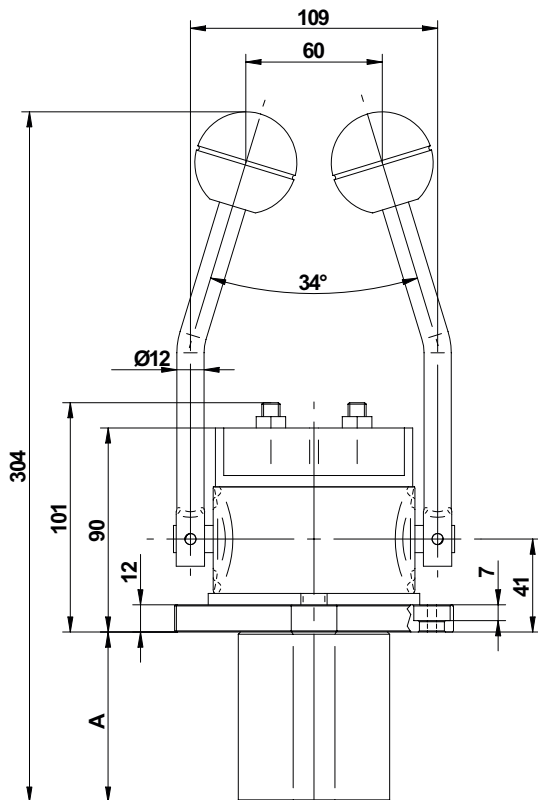
2 side levers with mechanical detent



A=75 mm FOR 1/4" BSP PORTS  
 A=82 mm FOR 9/16"-18 UNF SAE6 PORTS

**B3 - PILOT OPERATED CONTROL**

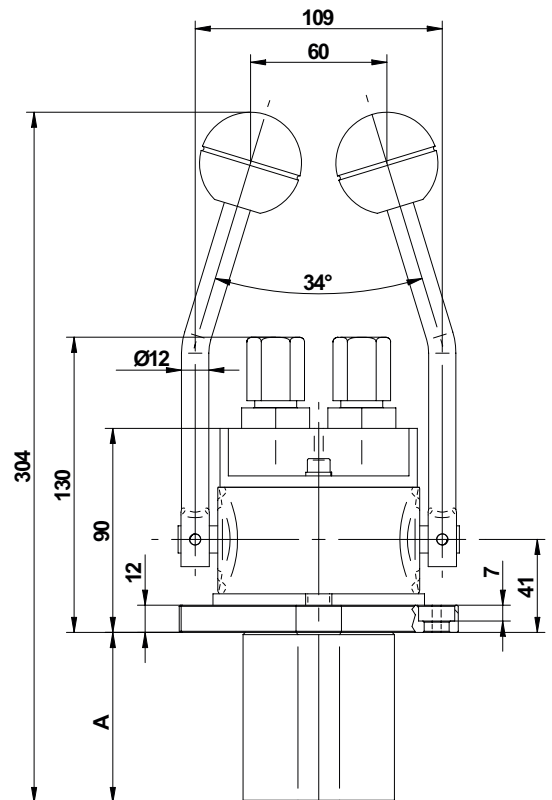
2 side levers with detent in any position



A=75 mm FOR 1/4" BSP PORTS  
 A=82 mm FOR 9/16"-18 UNF SAE6 PORTS

**B4 - PILOT OPERATED CONTROL**

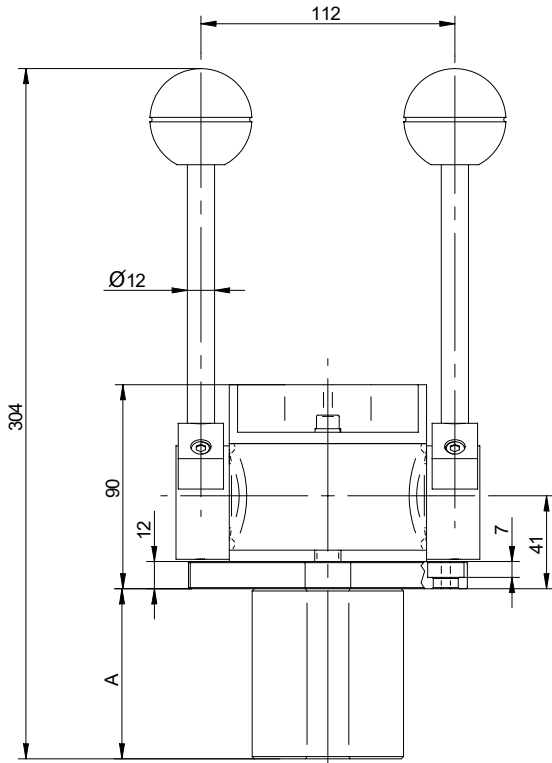
2 side levers with detent in any position + neutral position sensor



A=75 mm FOR 1/4" BSP PORTS  
 A=82 mm FOR 9/16"-18 UNF SAE6 PORTS

**B5 - PILOT OPERATED CONTROL**

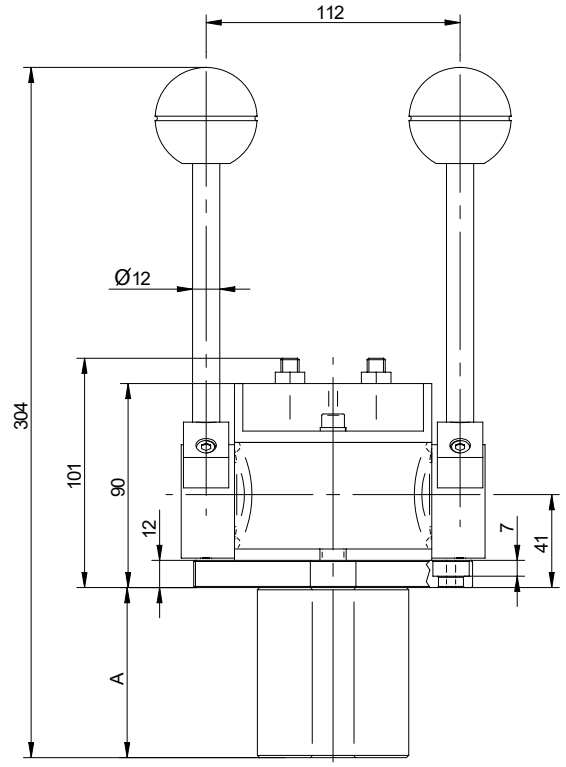
2 side levers with detent in rest



A=75 mm FOR 1/4" BSP PORTS  
 A=82 mm FOR 9/16"-18 UNF SAE6 PORTS

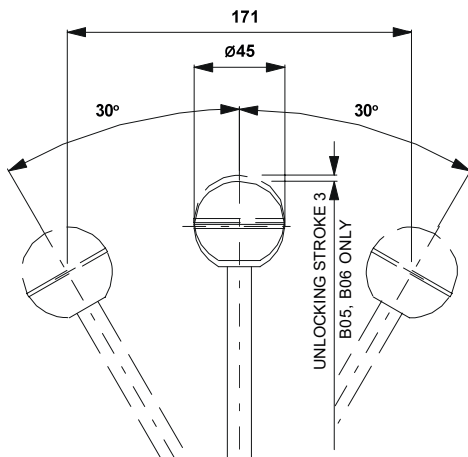
**B6 - PILOT OPERATED CONTROL**

2 side levers with detent in rest and clutch in any position

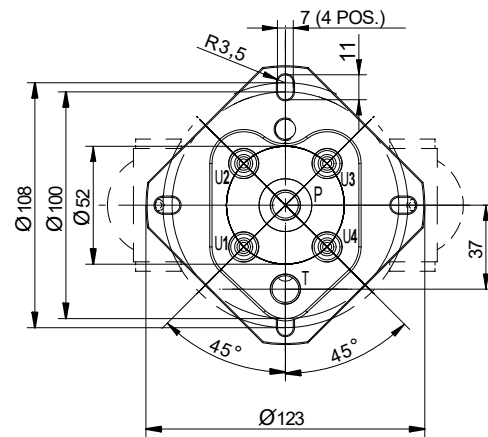


A=75 mm FOR 1/4" BSP PORTS  
 A=82 mm FOR 9/16"-18 UNF SAE6 PORTS

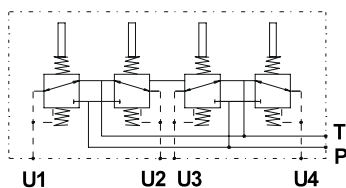
**LEVER MOVEMENT**



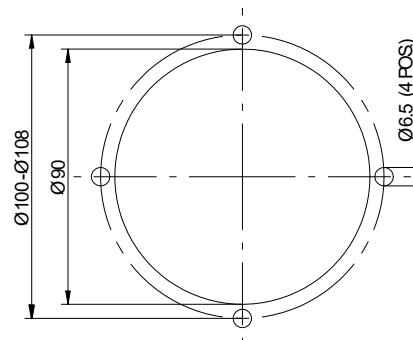
**FOOTPRINT**



**HYDRAULIC CIRCUIT DIAGRAM**

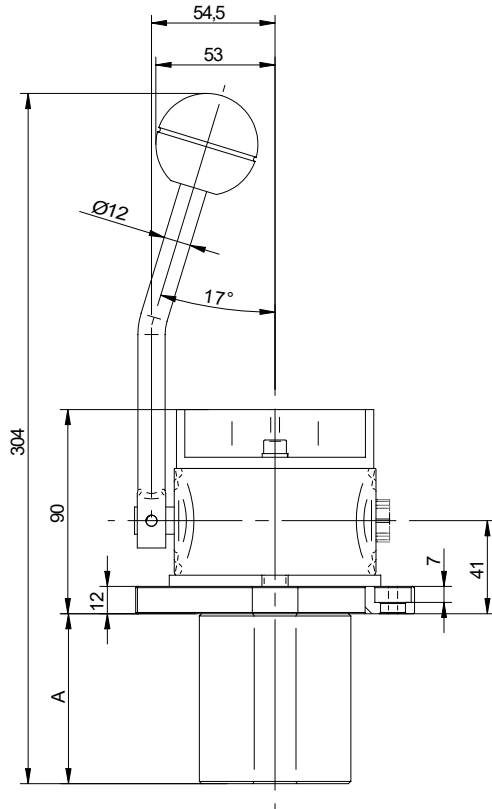


**INSTALLATION DRAWING**



**E1 - PILOT OPERATED CONTROL**

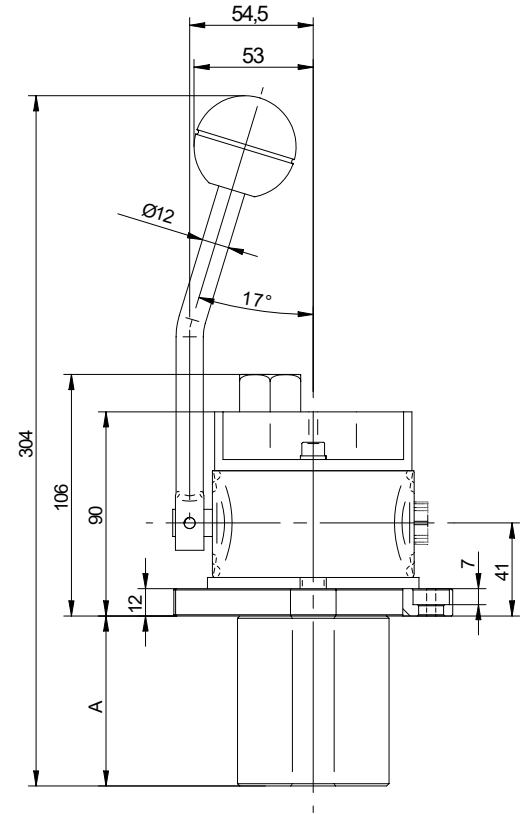
Single side lever with return spring



A=75 mm FOR 1/4" BSP PORTS  
 A=82 mm FOR 9/16"-18 UNF SAE6 PORTS

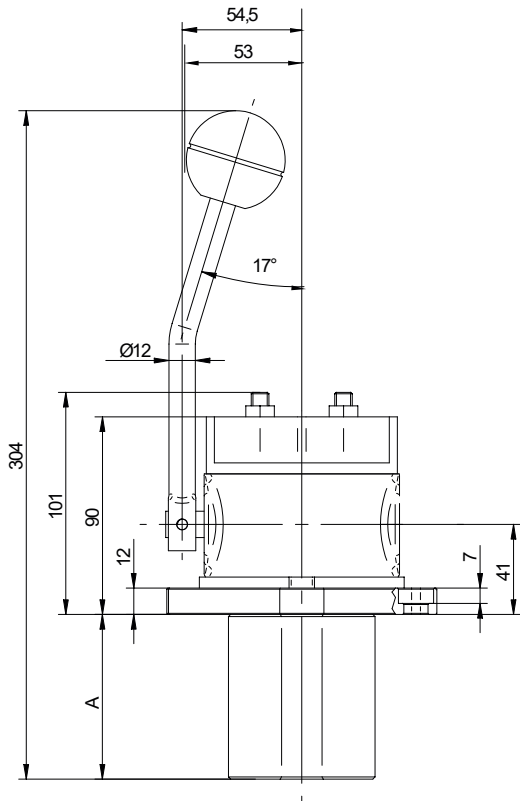
**E2 - PILOT OPERATED CONTROL**

Single side lever with mechanical detent



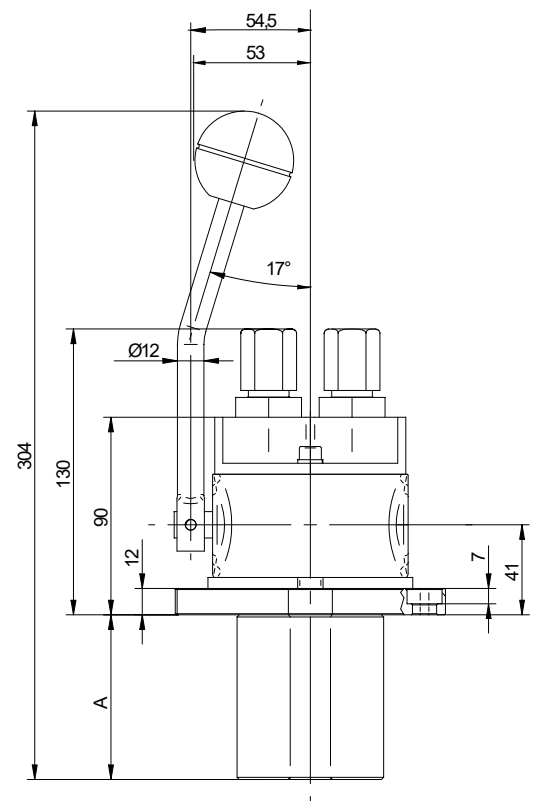
A=75 mm FOR 1/4" BSP PORTS  
 A=82 mm FOR 9/16"-18 UNF SAE6 PORTS

**E3 - PILOT OPERATED CONTROL**



A=75 mm FOR 1/4" BSP PORTS  
 A=82 mm FOR 9/16"-18 UNF SAE6 PORTS

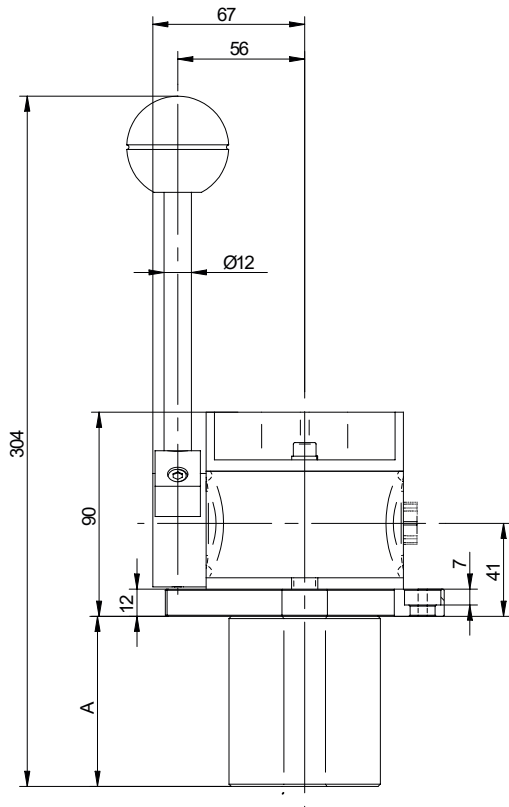
**E4 - PILOT OPERATED CONTROL**



A=75 mm FOR 1/4" BSP PORTS  
 A=82 mm FOR 9/16"-18 UNF SAE6 PORTS

**E5 - PILOT OPERATED CONTROL**

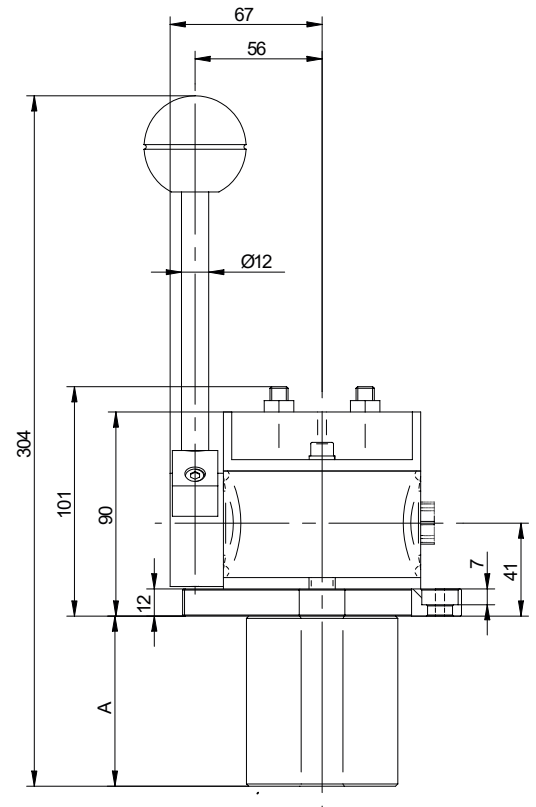
Single side lever with detent in rest



A=75 mm FOR 1/4" BSP PORTS  
 A=82 mm FOR 9/16"-18 UNF SAE6 PORTS

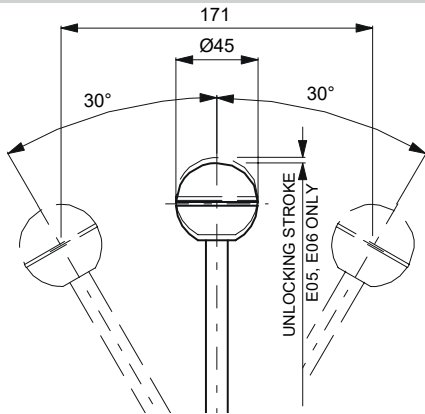
**E6 - PILOT OPERATED CONTROL**

Single side lever with detent in rest and clutch in any position

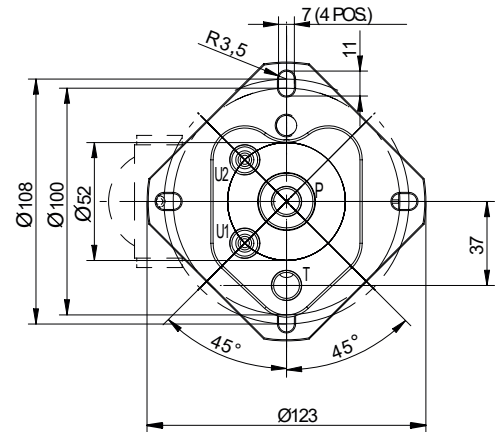


A=75 mm FOR 1/4" BSP PORTS  
 A=82 mm FOR 9/16"-18 UNF SAE6 PORTS

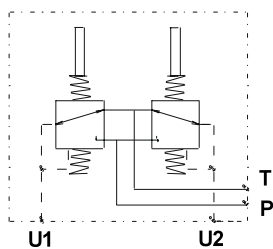
**LEVER MOVEMENT**



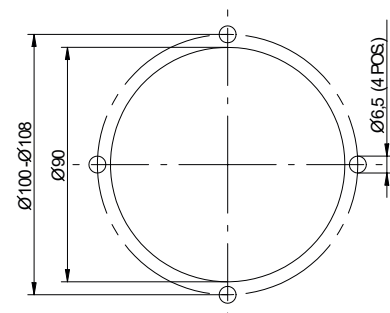
**FOOTPRINT**



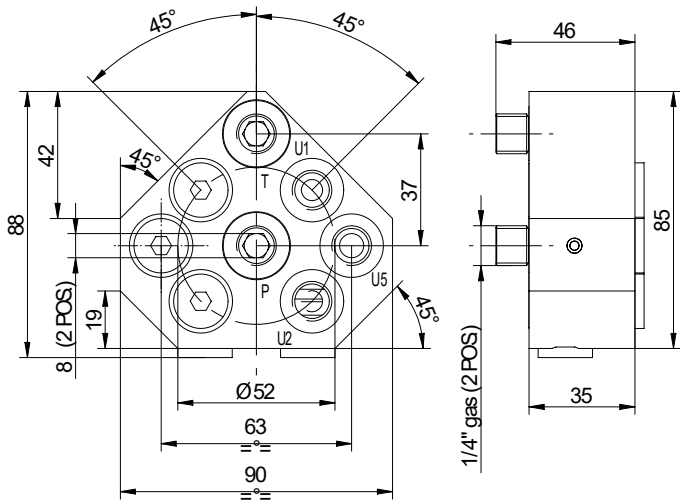
**HYDRAULIC CIRCUIT DIAGRAM**



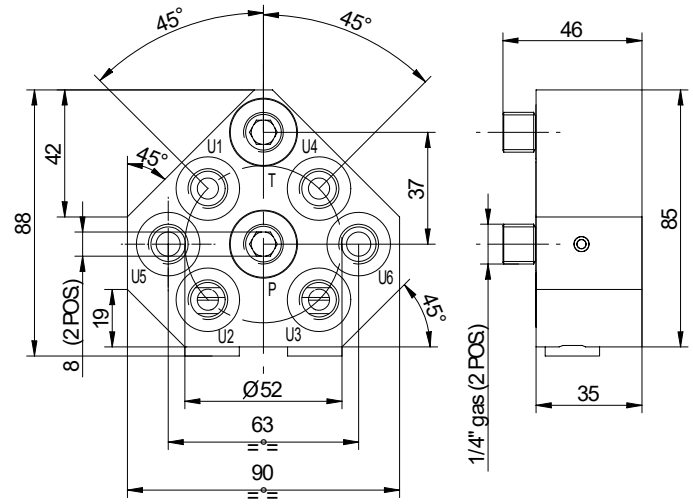
**INSTALLATION DRAWING**



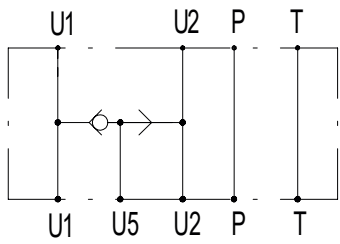
S1 - SHUTTLE BLOCK



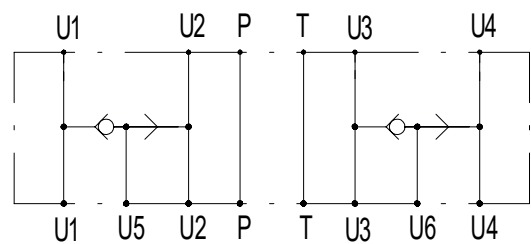
S2 - SHUTTLE BLOCK



HYDRAULIC CIRCUIT DIAGRAM



HYDRAULIC CIRCUIT DIAGRAM



Supported by a worldwide network



## CONTACT INFORMATION

### EMEA

<b>GERMANY</b>	Hydreco / Till, Helmstedt (NI)	☎ +49 (0) 5351 5586 0	✉ info@hydreco.de
<b>ITALY</b>	Hydreco Hydraulics Italia Srl, Vignola (MO)	☎ +39 059 7700411	✉ sales-it@hydreco.com
<b>ITALY</b>	Hydreco Hydraulics Italia Srl, Parma (PR)	☎ +39 0521 1830520	✉ sales-it@hydreco.com
<b>ITALY</b>	Hydreco Srl, San Cesario S/P (MO)	☎ +39 059 330091	✉ cylinders@hydreco.com
<b>NORWAY</b>	Hydreco Hydraulics Norway AS, Nittedal	☎ +47 22909410	✉ post-no@hydreco.com
<b>UK</b>	Hydreco Hydraulics Ltd, Poole, Dorset	☎ +44 (0) 1202 627500	✉ info-uk@hydreco.com

### AMERICAS

<b>NORTH/LATIN</b>	Hydreco Inc / Continental Hydraulics Inc, Shakopee (MN)	☎ +1 952 895 6400	✉ sales@conthyd.com
--------------------	---	-------------------	---------------------

### APAC

<b>AUSTRALIA</b>	Hydreco Hydraulics Pty Ltd, Seven Hills (NSW)	☎ +61 2 9838 6800	✉ sales-au@hydreco.com
<b>AUSTRALIA</b>	Hydreco Hydraulics Pty Ltd, Welshpool (WA)	☎ +61 8 9377 2211	✉ reception-wa@hydreco.com
<b>INDIA</b>	Hydreco Hydraulics India Private Ltd, Bangalore	☎ +91 80 67656300	✉ sales-in@hydreco.com

